

BEVERLY PALACE : 2 bedroom apartment, panoramic sea view

Vendita Monaco

Esclusività

6 500 000 €

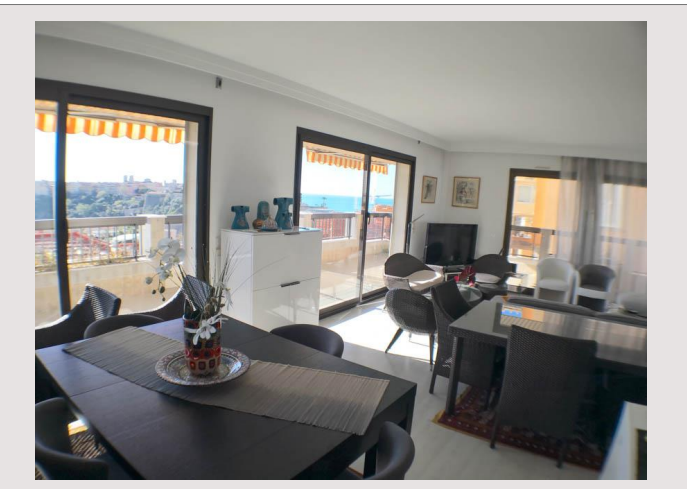
Beautiful 2 bedroom apartment, vue over the Port and the Rock.

Tipo prodotto	Appartamento	Residenza	Beverly Palace bloc A
Numero di stanze	3 stanze	Quartiere	Moneghetti
Superficie totale	171 m ²	Livello	3
Superficie abitabile	113 m ²	Parcheggi	1
Superficie terrazzi	58 m ²	Cantine	1
Costi annuali	16 000 €	Ref	ZRI-BEVERLY PALACE

This lovely apartment is situated in a well maintained building with concierge service, close to a public lift leading to the port area. It proposes a total surface of 171m² comprising a terrace of 58m². Entrance hall, large living and dining room, independant kitchen, guest toilet, 2 ensuite bedrooms, many wardrobes. The apartment is sold with a cellar and a big parking space.

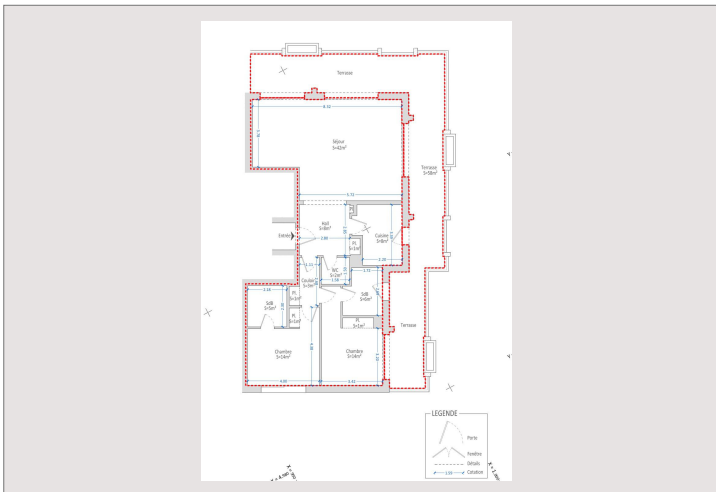
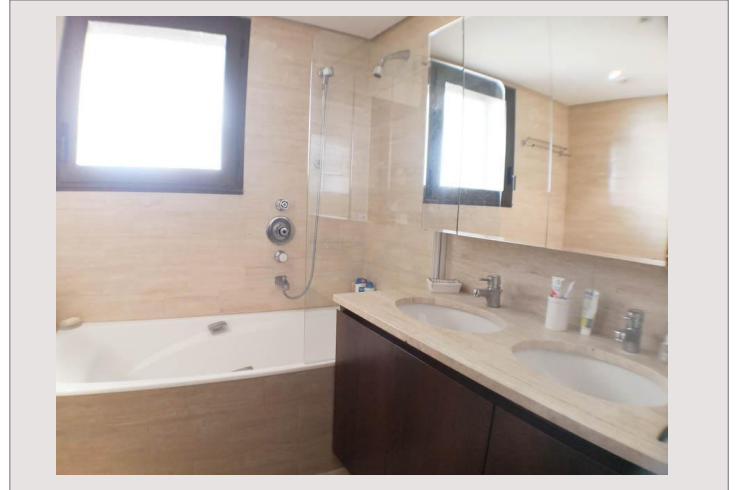
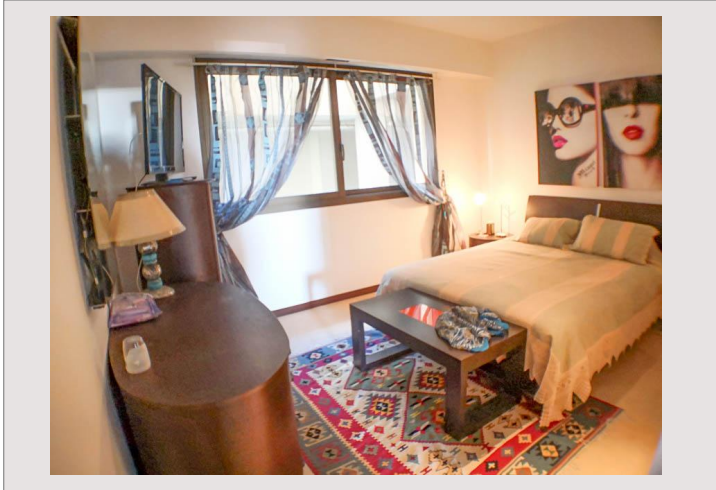


BEVERLY PALACE : 2 bedroom apartment, panoramic sea view



<https://www.chambre-immo.monte-carlo.mc/it/fiches/52353/>

BEVERLY PALACE : 2 bedroom apartment, panoramic sea view



<https://www.chambre-immo.monte-carlo.mc/it/fiches/52353/>